



# **STRONGHOLD** FACADE



**STRONGHOLD**  
FACADES



# ABOUT US.

We are a global conglomerate, providing cutting-edge building envelope solutions, Glass Facades, ACP Facades, and More since 1985, to bring unparalleled design possibilities to your projects. We go beyond boundaries to offer a complete suite of complementary products, meticulously crafted to blend aesthetics with functionality.

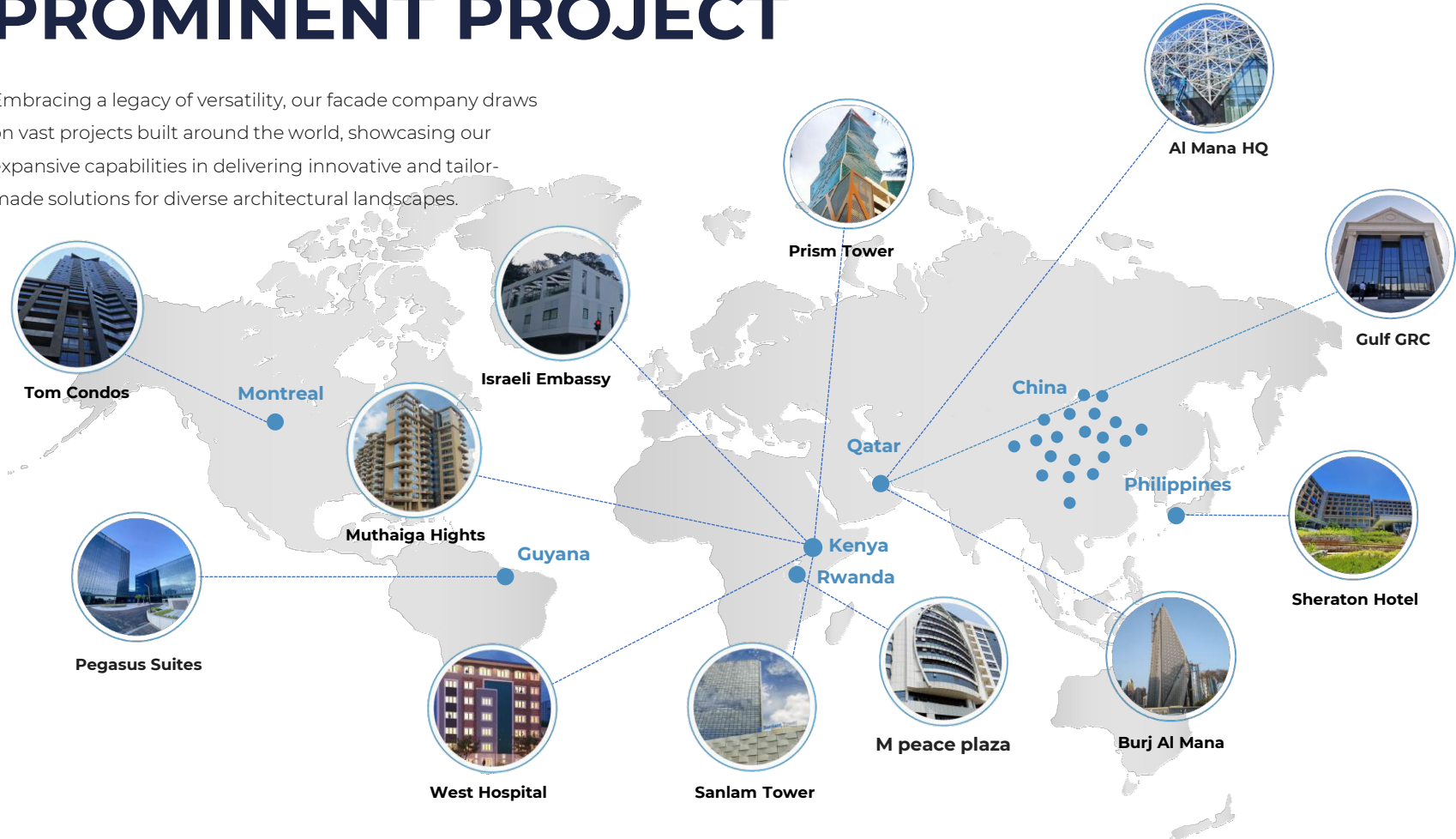
Our commitment is to provide you with a seamless, one-stop holistic solution that enhances the beauty and performance of your architectural endeavors.

[View More](#)



# PROMINENT PROJECT

Embracing a legacy of versatility, our facade company draws on vast projects built around the world, showcasing our expansive capabilities in delivering innovative and tailor-made solutions for diverse architectural landscapes.





# OUR MISSION

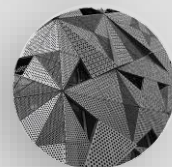
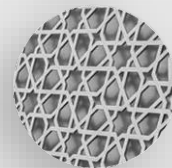
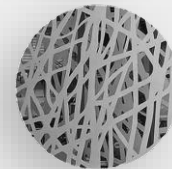
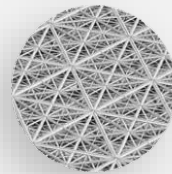
At Stronghold Facades Israel, our mission is to redefine global standards in design, engineering, and sustainability. Grounded in integrity and professionalism, we are dedicated to delivering tailor-made solutions with competitive pricing and top-notch service. Leveraging our deep expertise, fostering innovation, and showcasing an exceptional ability for high-volume production with extensive customization options, we strive to consistently surpass expectations in every project.





# OUR FACTORY

Our factory stands as a beacon of excellence, ranking among the world's largest and most advanced facade manufacturers. This distinction enables us to deliver unparalleled quality and innovation. With state-of-the-art production capabilities and extensive installation expertise, we offer a comprehensive vertical facade solution.



# OUR PRODUCTIONS IN NUMBERS



**70**

Project  
Completed



**20+**

Countries



**1500**

Employees



**7+**

Production  
Units



**200k Tons**

Production  
Area



**500k Tons**

Annual Curtain Wall  
Production



**120,000 tons**

Aluminum alloy  
profiles



**360,000 sqm**

Apartment  
doors / window



**450,000 sqm**

Curtain walls

# OUR PRODUCTS

## 01. Glass Facades:

Our facades are made with high quality materials and expert craftsmanship to ensure durability and aesthetic appeal.

## 02. ACP:

Enhance the aesthetics and durability of your structures with our top-notch ACP facades.

## 03. Mashrabiya:

We have cultivated significant capabilities in Mashrabiya production and design, seamlessly bridging tradition with contemporary flair for your buildings.

## 04. Glass partition:

Our glass partition are based on the idea of structural facades and exterior curtain walls. Providing a flexible and modular separation of space..



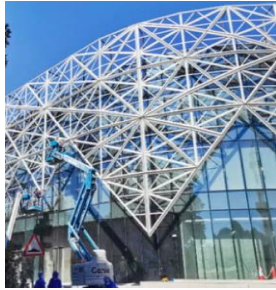
# Our Portfolio

Global Projects



**Gulf GRC, Qatar**

Stick system glass  
curtain wall



**Al Mana HQ ,Doha, Qatar**

3,200 Sqm Straight and  
Curved Mashrabiya



**Sheraton Cebu, Phillipines**

3,780 Sqm Aluminum  
windows & doors , 1,160 Sqm  
balcony railing



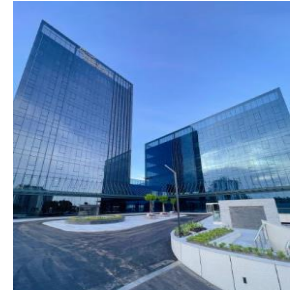
**Prism Tower, Nairobi, Kenya**

15,000 Sqm Curtain wall



**Burj Al Mana Qatar**

42,000Sqm Unitized glass  
curtain wall, 37,000 Sqm  
Mashrabiya as sunshade



**Pegasus Suites Guyana**

13,548 Sqm Invisible frame  
curtain wall

Introducing our portfolio of iconic aluminum facade projects worldwide at Stronghold Facade. From modern landmarks to sustainable designs, our diverse range of projects showcases the versatility and durability of aluminum facades. Collaborating globally with visionary architects and developers, we push boundaries in design and sustainability to create the next iconic .landmarks together





# THANK YOU!

For more information:

**[www. Strongholdfacade.com](http://www.Strongholdfacade.com)**

**Fabian Laszlo**



[Office@regilog.ro](mailto:Office@regilog.ro)



[www.strongholdfacade.com](http://www.strongholdfacade.com)



15 Bolyai st., Târgu Mureș  
540064, România



**STRONGHOLD**  
— FACADES —